



云智科技
YDEACHN.COM

Service Hotline: 400-666-9216



Controller Specification

C-3.0

Version: V02 Date: 2017-07-31

Product Summary

Main controller C series is a full range of vide solution designed for the needs of high-end display applications , with features of large loading area, supporting real-time transmission, dot-by-dot correction function, field upgrade, high grayscale & high refresh, various scanning modes, LED fault information transmitted and diagnosis and dot-by-dot monitoring function etc.

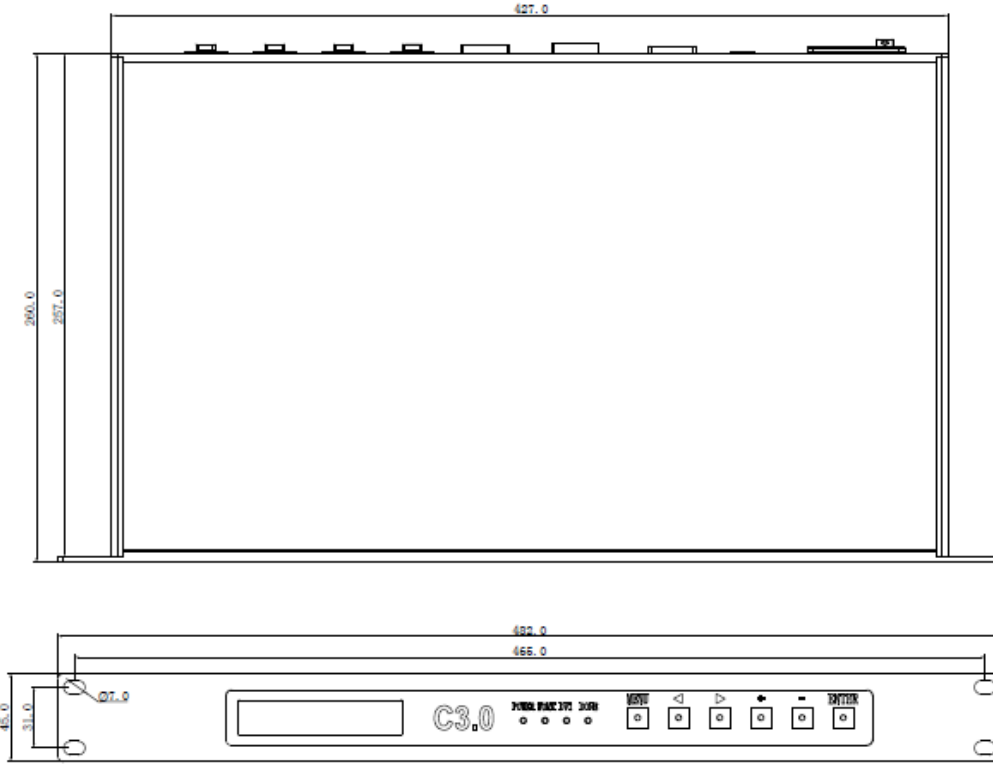
Product Feature

- Input resolutions up to 1920 * 1200.
- Output resolution up to 1920 * 1200.
- DVI video input, four Ethernet ports output.
- Control Support USB interface and control panel.
- Replace the screen without having to re-set the body.

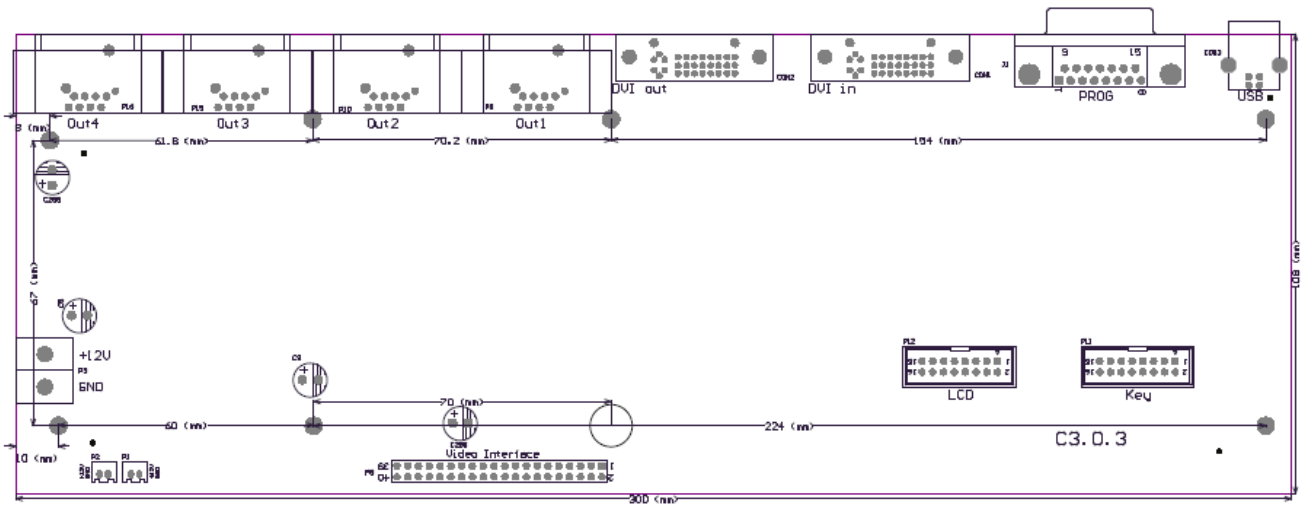
Technical Specifications

Control area	1920 × 1200	Distributor	Support
Input resolution	640x480-1920 × 1200	Load Split	Horizontal, Vertical
Output resolution	1920 × 1200	Shaped Display	Support
Multi-machine in parallel	Support	Transmission distance	100m
Video Input	DVI	Control Interface	USB、Panel Button
DVI Loop	Support	Temperature	-10℃-60℃
Pixel by pixel correction	Luminance、Color	Power	100-240VAC 50/60HZ
Online upgrade	Support	Size (L × W × H)	480 × 300 × 44 (mm)

Chassis Dimensions



Board Dimensions



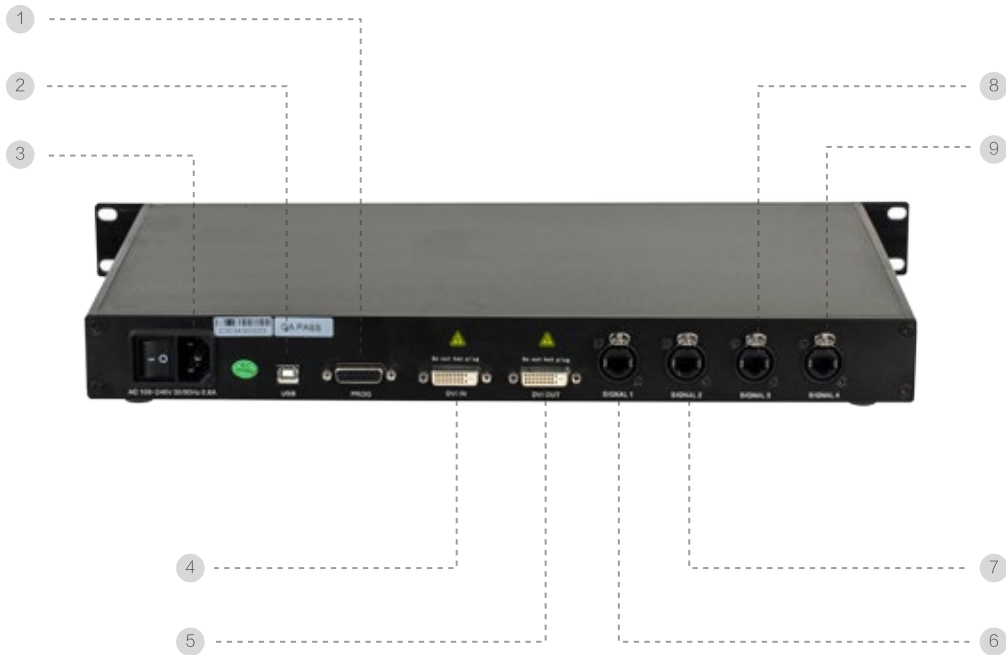
Chassis Interface Definition

● Front View



- ① LCD ② Working indicator light ③ Power indicator light ④ DVI indicator light ⑤ Done indicator light ⑥ Menu/Exit
- ⑦ Next secondary menu ⑧ Previous secondary menu ⑨ Plus ⑩ Minus ⑪ Enter

● Back View



- ① Power interface ② USB interface ③ Programming interface ④ DVI image input ⑤ DVI image output ⑥ Signal output port 1
- ⑦ Signal output port 2 ⑧ Signal output port 3 ⑨ Signal output port 4

Board Chassis Interface Definition



- 1 USB to Serial port
- 2 Write the program port
- 3 DVI input
- 4 DVI output
- 5 Signal output 1
- 6 Signal output 2
- 7 Signal output 3
- 8 Signal output 4